

Pictures of Data Solutions

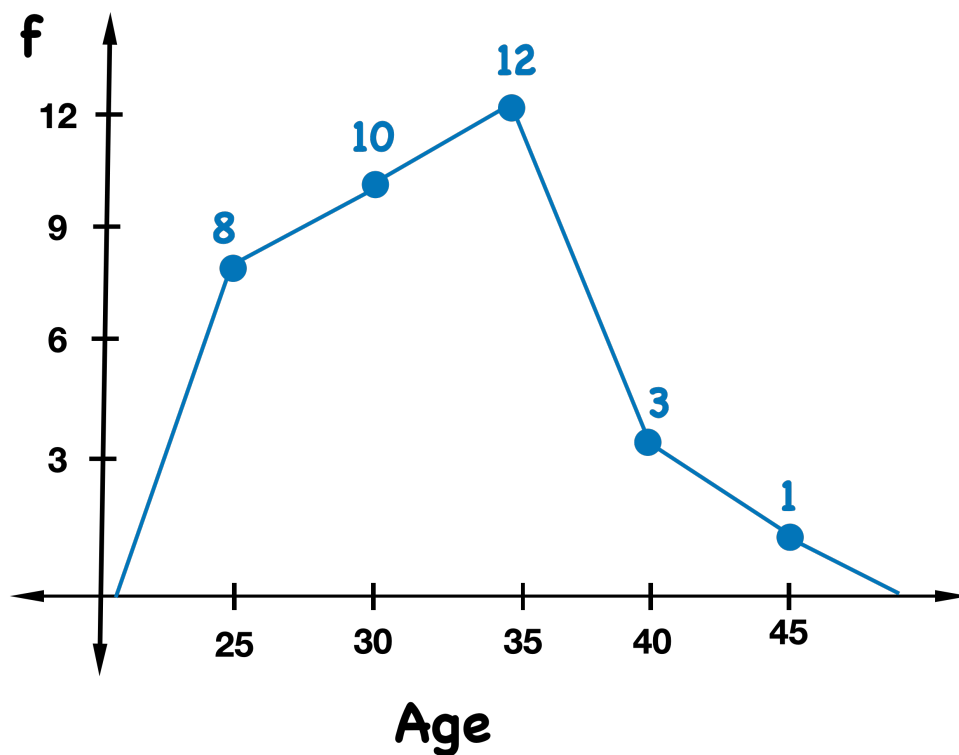
Frequency Polygons

Construct a **Frequency Polygon** for the following Relative Frequency Tables and describe the distribution as **left skew**, **right skew**, **normal**, **uniform**, or **neither**.

1. How old are you?

The following sample data table illustrates the ages (years) of students in a Statistics class.

Years	f	m
23 to 27	8	25
28 to 32	10	30
33 to 37	12	35
38 to 42	3	40
43 to 47	1	45

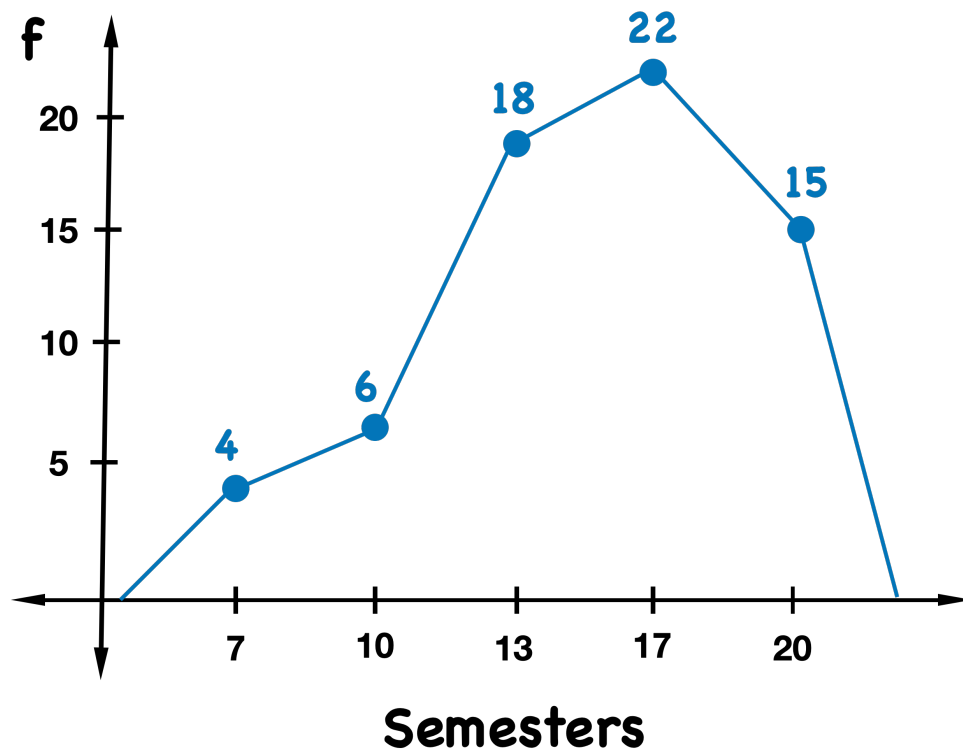


The data looks right skewed!

2. How many semesters did it take for you to transfer?

The following sample data illustrates the number of semesters it took for students to transfer from a Community College.

Semesters	f	m
6 to 8	4	7
9 to 11	6	10
12 to 14	18	13
15 to 17	22	16
18 to 20	15	19

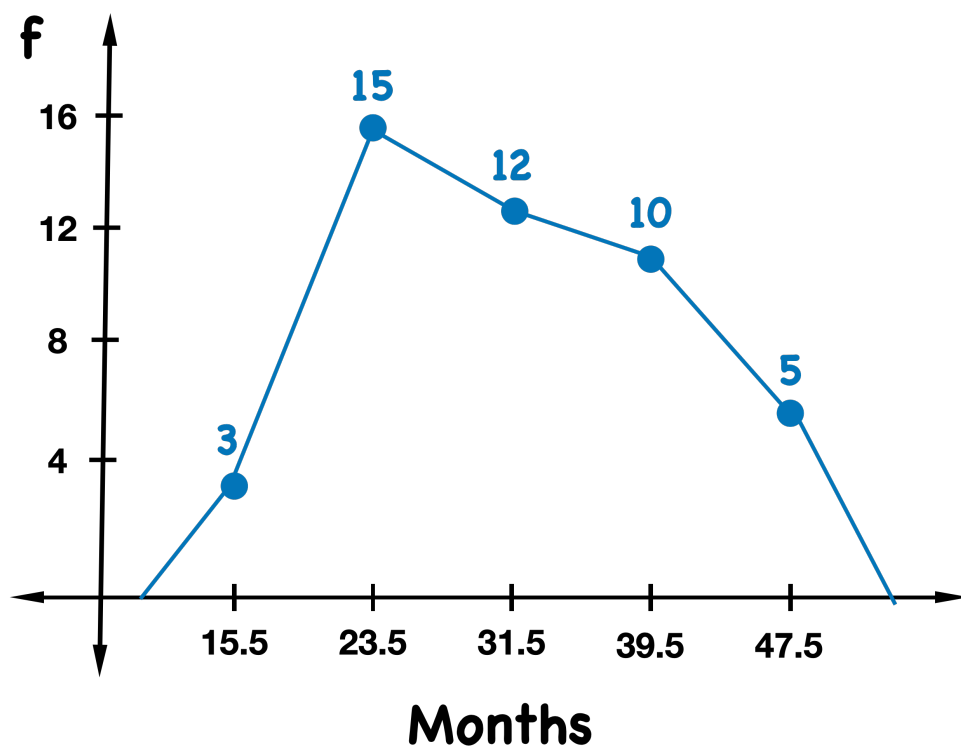


The data looks left skewed!

3. Lifespan of an iPhone?

The following data illustrates the lifespan (months) of an iPhone for various customers at Best Buy.

Months	f	m
12 to 19	3	15.5
20 to 27	15	23.5
28 to 35	12	31.5
36 to 43	10	39.5
44 to 51	5	47.5

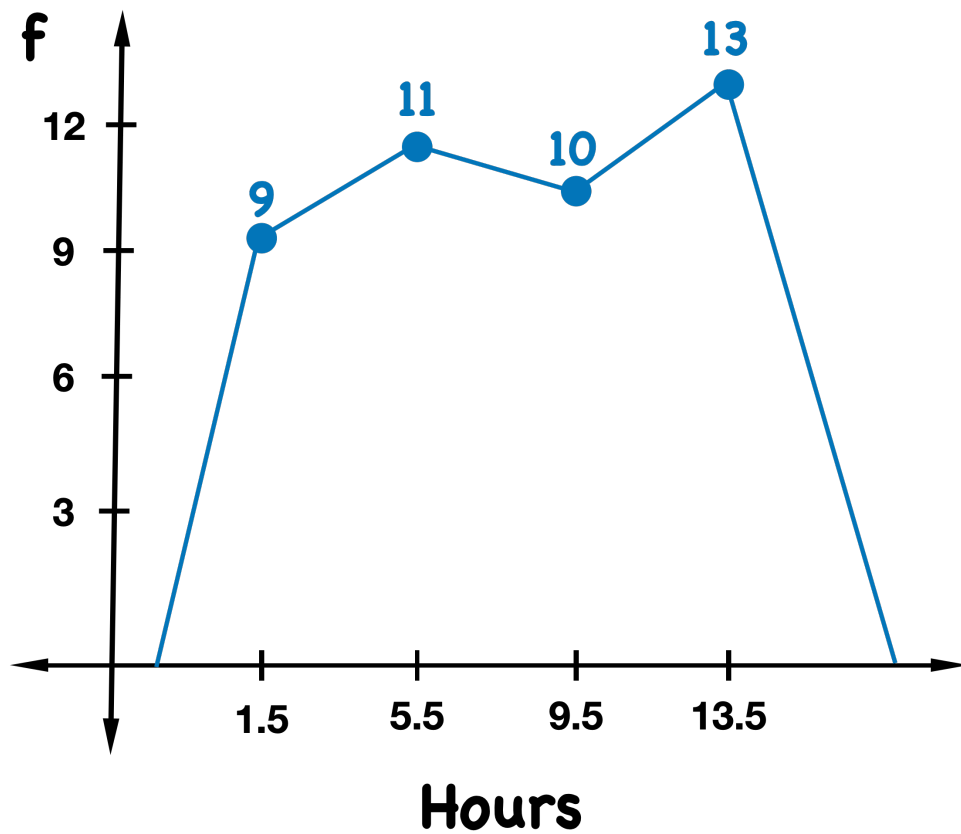


The data looks left skewed!

4. How much sleep do you get during the weekdays?

The following data illustrates the amount of time (hours) students sleep during a weeknight.

Hours	f	m
0 to 3	9	1.5
4 to 7	11	5.5
8 to 11	10	9.5
12 to 15	13	13.5

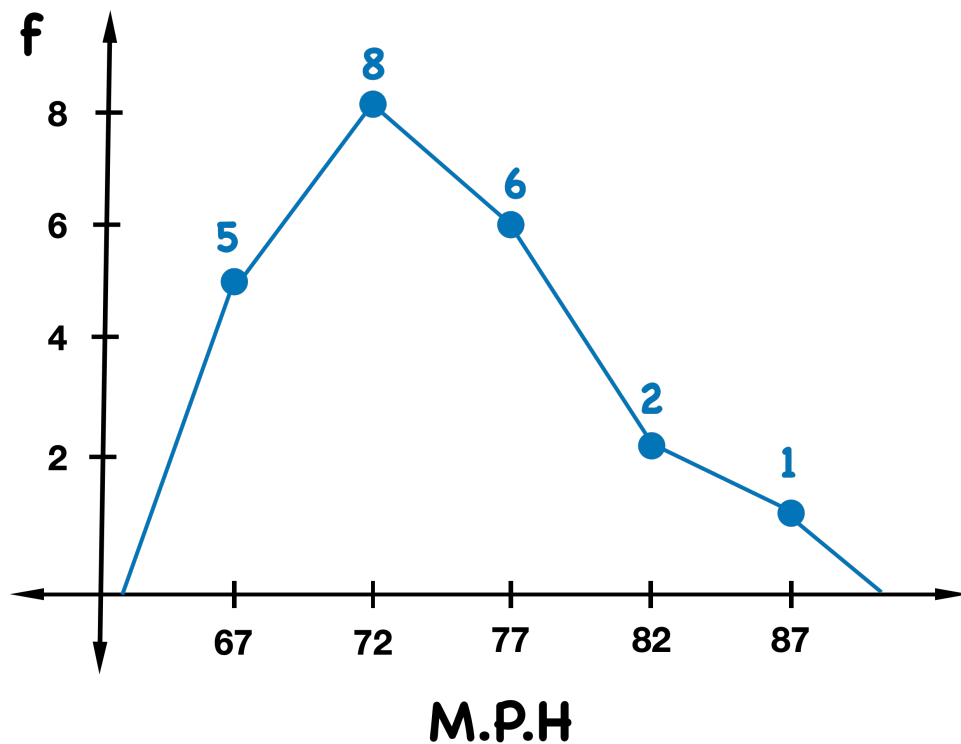


The data looks neither!

5. How fast do you drive on the freeway?

The following sample data illustrates the speed (MPH) of cars on the freeway.

MPH	f	m
65 to 69	5	67
70 to 74	8	72
75 to 79	6	77
80 to 84	2	82
85 to 89	1	87



The data looks right skew!